

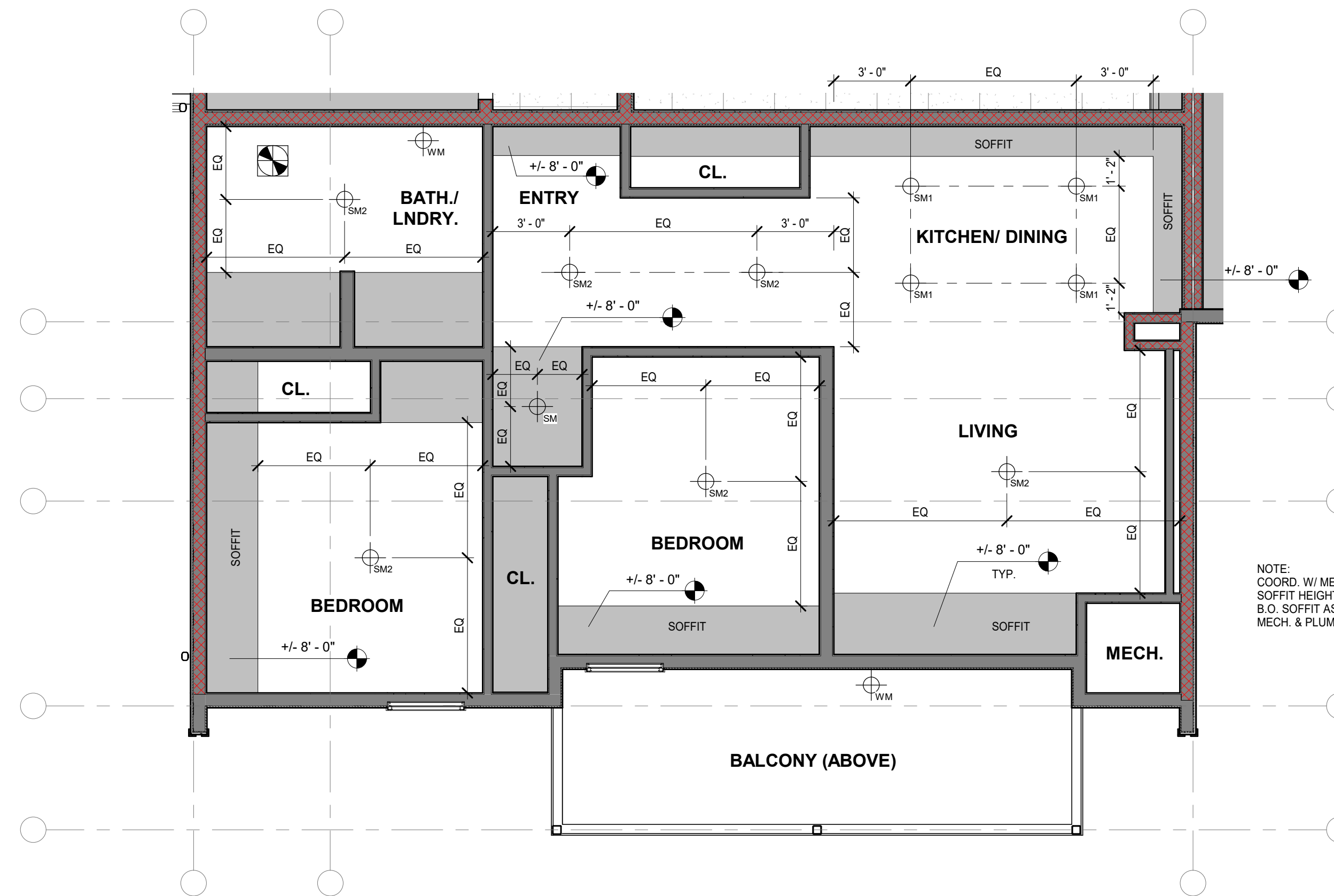
NOTE:  
COORD. W/ MEP ALL  
SOFFIT HEIGHTS, LOCATE  
B.O. SOFFIT AS CLOSE TO  
MECH. & PLUMBING, TYP.

**2** 2 BEDROOM (ACCESSIBLE) - RCP  
**A224** 1/4" = 1'-0"



NOTE:  
COORD. W/ MEP ALL  
SOFFIT HEIGHTS, LOCATE  
B.O. SOFFIT AS CLOSE TO  
MECH. & PLUMBING, TYP.

**1** 2 BEDROOM (TYPE 1) - RCP  
**A224** 1/4" = 1'-0"



NOTE:  
COORD. W/ MEP ALL  
SOFFIT HEIGHTS, LOCATE  
B.O. SOFFIT AS CLOSE TO  
MECH. & PLUMBING, TYP.

**3** 2 BEDROOM (TYPE 2) - RCP  
**A224** 1/4" = 1'-0"

**intrinsik**  
ARCHITECTURE  
INCORPORATED

111 North Tracy • Bozeman, Montana • 59715 • Ph: 406.582.8988 • Fax: 406.582.8911 © 2020 INTRINSIK



No.	Description	Date

revisions

1645 COOLEY ST.  
MISSOULA, MT 59808

address

**TAM**  
TRINITY APARTMENTS  
MAIN BUILDING

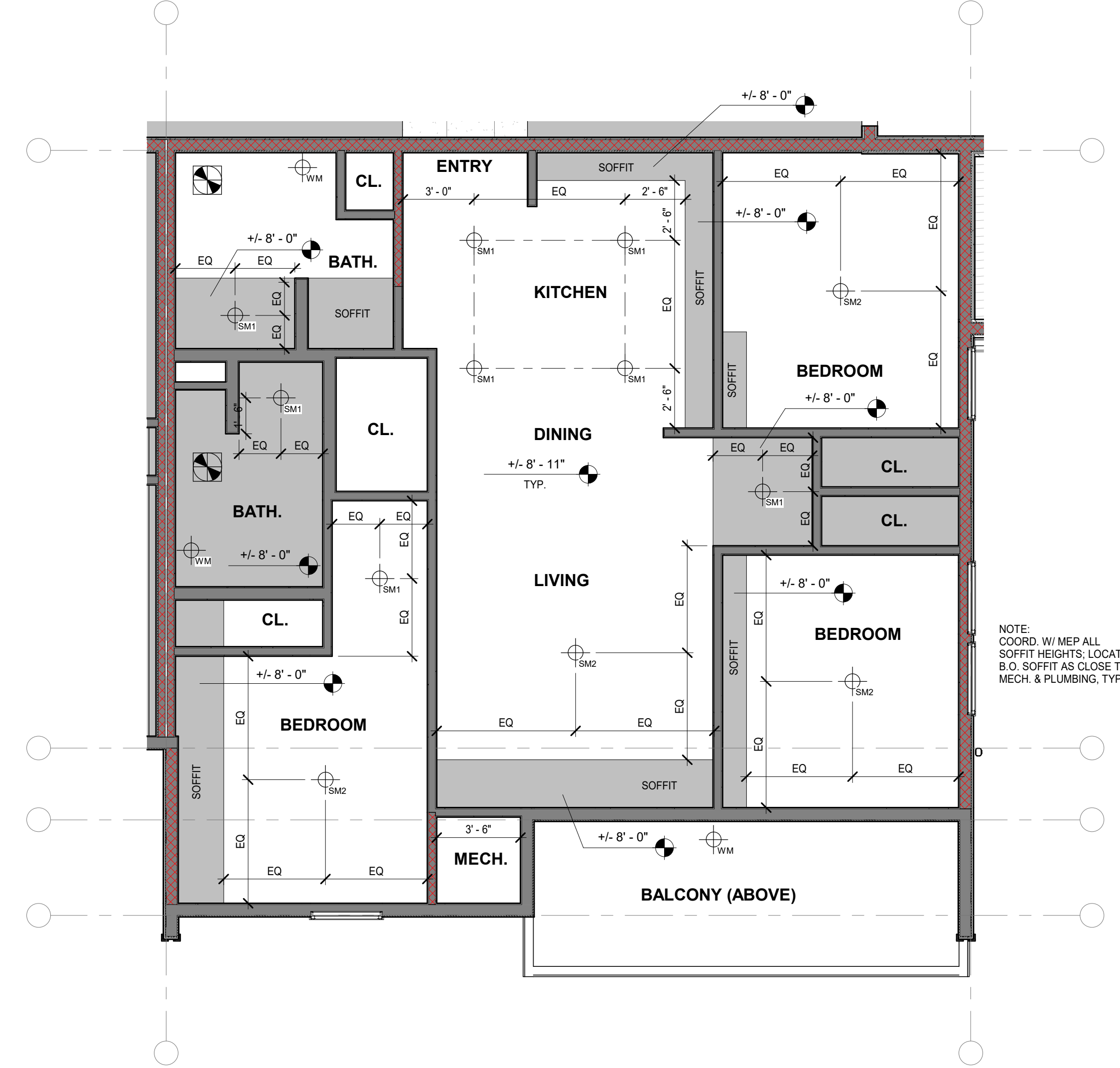
project code

**A224**  
ENLARGED UNIT PLANS -  
REF. CEILING PLAN  
BID SET  
01.04.2021  
sheet



NOTE:  
COORD. W/ MEP ALL  
SOFFIT HEIGHTS. LOCATE  
B.O. SOFFIT AS CLOSE TO  
MECH. & PLUMBING, TYP.

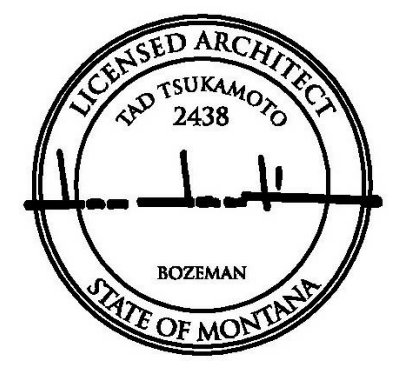
**2** 3 BEDROOM (ACCESSIBLE) - RCP  
**A225:** 1/4" = 1'-0"



NOTE:  
COORD. W/ MEP ALL  
SOFFIT HEIGHTS. LOCATE  
B.O. SOFFIT AS CLOSE TO  
MECH. & PLUMBING, TYP.

**1** 3 BEDROOM - RCP  
**A225:** 1/4" = 1'-0"

**intrin:sik**  
ARCHITECTURE  
INCORPORATED



No.	Description	Date

revisions

1645 COOLEY ST.  
MISSOULA, MT 59808

address

**TAM**  
TRINITY APARTMENTS  
MAIN BUILDING

project code

**A225**  
ENLARGED UNIT PLANS -  
REF. CEILING PLAN  
BID SET  
01.04.2021  
sheet



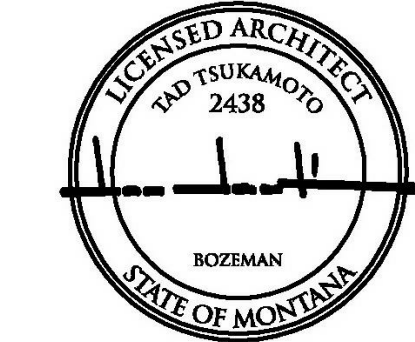


**2** 4 BEDROOM (ACCESSIBLE) - RCP  
A227: 1/4" = 1'-0"



**1** 4 BEDROOM - RCP  
A227: 1/4" = 1'-0"

**intrin:sik**  
ARCHITECTURE  
INCORPORATED



No.	Description	Date

revisions

1645 COOLEY ST.  
MISSOULA, MT 59808

address

**TAM**  
TRINITY APARTMENTS  
MAIN BUILDING

project code

**A226**  
ENLARGED UNIT PLANS -  
REF. CEILING PLAN  
BID SET  
01.04.2021  
sheet





